

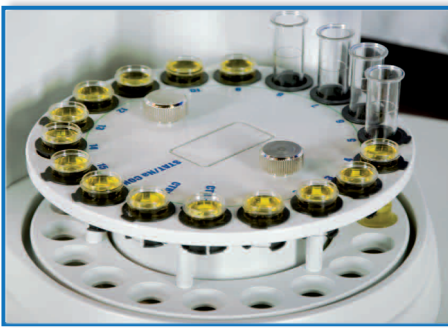
BT 642

ISE Lyte



ION SELECTIVE ANALYZER

*Direct potentiometry serum, plasma, diluted urine
180 samples/hour
Na, K, Cl, Li sensors
Sample size 180 μ L
3,2" TFT color LCD display with touch-screen*



BT 642

TECHNICAL SPECIFICATIONS

Features

Direct potentiometry serum, plasma, diluted urine

Sample size 180 μ L

Na, K, Cl, Li sensors

180 samples/hour

Auto calibration

18 Sample turntable positions (15 samples + 1 STAT + 2 controls)

Single pack for reagents and waste

Built-in thermal printer

On board QC storage 2 levels 21 days

Software

User friendly graphic interface

Easy up-dating software

Host interface

Electronics

3,2" TFT color LCD display with touch-screen

16 bit microprocessor with up to 512 Kb flash memory

USB or RS232C port

Power supply 100-240 Volt a.c. and 24 Volt d.c.

Power consumption 40W

Dimension and weight

Width 28 cm (11,03") Depth 22 cm (8,67") Height 42 cm (16,55") Weight 8 Kg. (17,64 lbs.)

Features may change without notice.
REV.2

biotecnica instruments s.p.a.

00156 ROMA - VIA LICENZA, 18 - TEL. +39 06 411.23.16 FAX +39 06 410.30.79

E mail: bi@biotecnica.it - www.biotecnica.it

